

MRPL9 Antibody (N-term)
Affinity Purified Rabbit Polyclonal Antibody (Pab)
Catalog # AP13041a**Specification**

MRPL9 Antibody (N-term) - Product Information

Application	IHC-P, WB,E
Primary Accession	Q9BYD2
Other Accession	Q2TBK2 , NP_113608.1
Reactivity	Human
Predicted	Bovine
Host	Rabbit
Clonality	Polyclonal
Isotype	Rabbit IgG
Calculated MW	30243
Antigen Region	66-95

MRPL9 Antibody (N-term) - Additional Information**Gene ID** 65005**Other Names**

39S ribosomal protein L9, mitochondrial, L9mt, MRP-L9, MRPL9

Target/Specificity

This MRPL9 antibody is generated from rabbits immunized with a KLH conjugated synthetic peptide between 66-95 amino acids from the N-terminal region of human MRPL9.

Dilution

IHC-P~~1:10~50

WB~~1:1000

E~~Use at an assay dependent concentration.

Format

Purified polyclonal antibody supplied in PBS with 0.09% (W/V) sodium azide. This antibody is purified through a protein A column, followed by peptide affinity purification.

Storage

Maintain refrigerated at 2-8°C for up to 2 weeks. For long term storage store at -20°C in small aliquots to prevent freeze-thaw cycles.

Precautions

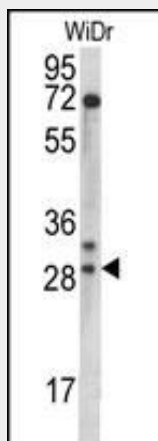
MRPL9 Antibody (N-term) is for research use only and not for use in diagnostic or therapeutic procedures.

MRPL9 Antibody (N-term) - Protein Information**Name** MRPL9

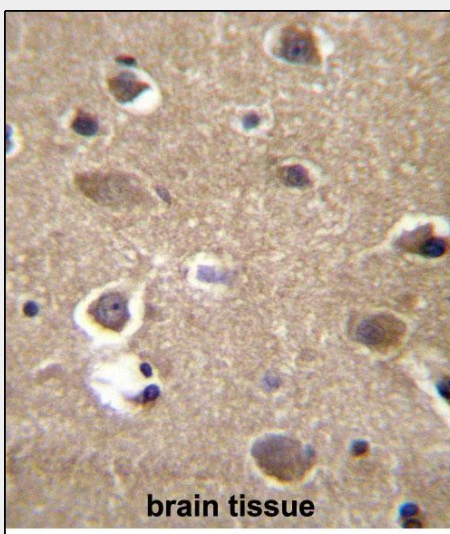
Cellular Location
Mitochondrion**MRPL9 Antibody (N-term) - Protocols**

Provided below are standard protocols that you may find useful for product applications.

- [Western Blot](#)
- [Blocking Peptides](#)
- [Dot Blot](#)
- [Immunohistochemistry](#)
- [Immunofluorescence](#)
- [Immunoprecipitation](#)
- [Flow Cytometry](#)
- [Cell Culture](#)

MRPL9 Antibody (N-term) - Images

MRPL9 Antibody (N-term) (Cat. #AP13041a) western blot analysis in WiDr cell line lysates (35ug/lane). This demonstrates the MRPL9 antibody detected the MRPL9 protein (arrow).



MRPL9 Antibody (N-term) (Cat. #AP13041a) immunohistochemistry analysis in formalin fixed and paraffin embedded human brain tissue followed by peroxidase conjugation of the secondary

antibody and DAB staining. This data demonstrates the use of MRPL9 Antibody (N-term) for immunohistochemistry. Clinical relevance has not been evaluated.

MRPL9 Antibody (N-term) - Background

Mammalian mitochondrial ribosomal proteins are encoded by nuclear genes and help in protein synthesis within the mitochondrion. Mitochondrial ribosomes (mitoribosomes) consist of a small 28S subunit and a large 39S subunit. They have an estimated 75% protein to rRNA composition compared to prokaryotic ribosomes, where this ratio is reversed. Another difference between mammalian mitoribosomes and prokaryotic ribosomes is that the latter contain a 5S rRNA. Among different species, the proteins comprising the mitoribosome differ greatly in sequence, and sometimes in biochemical properties, which prevents easy recognition by sequence homology. This gene encodes a 39S subunit protein. A pseudogene corresponding to this gene is found at 8q21.11. [provided by RefSeq].

MRPL9 Antibody (N-term) - References

Naukkarinen, J., et al. PLoS Genet. 6 (6), E1000976 (2010) :
Zhang, Z., et al. Genomics 81(5):468-480(2003)
Koc, E.C., et al. J. Biol. Chem. 276(47):43958-43969(2001)
Kenmochi, N., et al. Genomics 77 (1-2), 65-70 (2001) :
Suzuki, T., et al. J. Biol. Chem. 276(24):21724-21736(2001)